

Creative Classrooms

Confidence

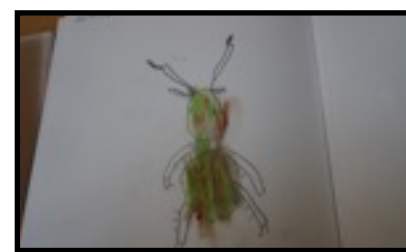
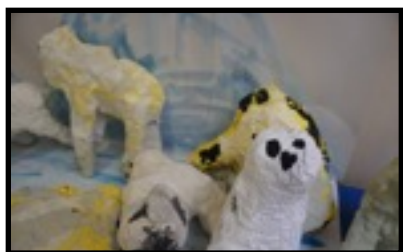
CONFIDENCE

At Benton Dene Special School creative arts teachers are driven by a belief that a student's creativity is a vital part of what makes that student unique. Creativity helps children to solve problems and overcome challenges. It fosters resolve, inquiry, new perspectives, independence, positivity and confidence.



CONFIDENCE

At Benton Dene Special School access to the creative arts is an entitlement. Staff recognise that each student is starting their learning journey from a different point due to their own needs. Students can have a spiky assessment profile and will develop and progress at different rates. All students are supported to reach their full potential. Assessment techniques have been developed to manage this complexity. In music for example formal video footage with QR codes is used to accurately assess student progress, as well as to support self and peer assessment.



Repetition of structural processes allows creativity and student voice to grow and gain confidence, both staff and students learning from and building on previous experiences. Subject leaders use a range of simple versions of specific techniques with all students to enable them to express themselves and be involved at their own level, supporting appropriate inclusion and allowing talent to shine.